

# The Bagpipe Scale

Your left hand should be on top of the chanter and your right hand on the bottom of the chanter.

The diagram shows the Bagpipe Scale with corresponding fingering for each note. The notes and their fingerings are as follows:

Note	Fingering (Holes 1-8)
LG	● ● ● ● ● ● ● ●
LA	○ ● ● ● ● ● ● ●
B	○ ● ● ● ● ● ● ●
C	○ ● ● ● ● ● ● ●
D	○ ○ ● ● ● ● ● ●
E	○ ○ ● ● ● ● ● ●
F	○ ○ ● ● ● ● ● ●
HG	○ ○ ○ ● ● ● ● ●
HA	○ ○ ○ ● ● ● ● ●
HG	○ ○ ○ ● ● ● ● ●
F	○ ○ ● ● ● ● ● ●
E	○ ○ ● ● ● ● ● ●
D	○ ○ ○ ● ● ● ● ●
C	○ ○ ○ ● ● ● ● ●
B	○ ○ ○ ● ● ● ● ●
LA	○ ○ ○ ● ● ● ● ●
LG	○ ○ ○ ● ● ● ● ●

## Strikes



### **Top Hand Strikes**

Sound the note, strike the next available finger down on the hole, finishing on the original note.

### **Bottom Hand Strikes**

Sound the note, strike your bottom hand all the way to Low G, lift them back up together finishing on the original note.

# Wake Me Up

This tune was written by Avicci and contains Strikes.  
To hear it played on the bagpipes, search YouTube for Red Hot Chilli Pipers Avicci.

*B B LA B D B LA B LA D D E D E F D*

### G Gracenotes



A musical staff in treble clef showing a sequence of notes. The notes are: G (low), A, B, C, D, E, F, G, A, G, F, E, D, C, B, A, G. Each note has a vertical line below it with a label: LG, LA, B, C, D, E, F, HG, HA, HG, F, E, D, C, B, LA, LG. The notes are played in pairs: (LG, LA), (B, C), (D, E), (F, HG), (HA, HG), (F, E), (D, C), (B, LA), (LG, LA).

Sound the Low G.  
Lift up the index finger of your Left Hand.  
As you bring the index finger back down, lift up the pinky on your Right Hand.



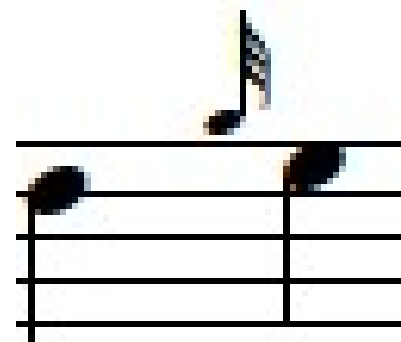
A diagram showing the hand positions for playing G Gracenotes. It consists of two staves. The top staff has a single note on the G line (treble clef). The bottom staff has two notes: one on the G line (treble clef) and one on the A line (treble clef). Below the bottom staff are the labels LG and LA.

Sound the D.

Lift up the index finger on your Left Hand.

As you bring your index finger down, cross over to E on the top hand.

Make sure you have put your bottom hand back to the Low A position.

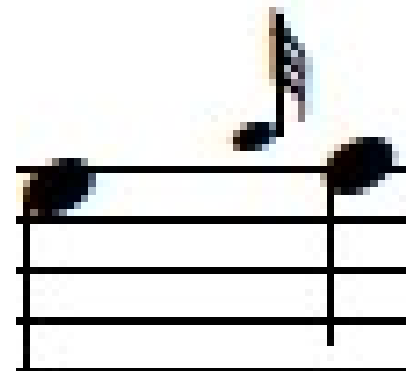


D E

Sound the E.

Lift up both your index finger and middle finger on the Left Hand.

Put your index finger back down, sounding the note F.



E F

# Tune 1: Bonnie Galloway

This tune contains G Gracenotes, strikes on High A and strikes on D.

The musical score for 'Bonnie Galloway' is presented in four staves, each with a treble clef and a 4/4 time signature. The notes are represented by letters: F, C, E, D, B, D, LA, LA, B, D, F, E, HA, HA, F, D, C, B, C, D, E, LA. The notes are placed on a five-line staff, with 'LA' indicating a strike on the high A (the space above the top line) and 'HA' indicating a strike on the high A (the space above the top line). The notes are connected by stems and beams, and some are grouped with slurs. The first staff contains the first two measures, the second staff the next two, the third staff the next two, and the fourth staff the final two measures, ending with a double bar line.

F\_\_ C E D B D\_\_ LA LA\_\_ B D F E\_\_ F E LA

F\_\_ C E D B D\_\_ LA LA\_\_ B D F E\_\_ D D

HA\_\_ HA F D HA D F HA\_\_ HA F D C B C D E LA

F\_\_ C E D B D\_\_ LA LA\_\_ B D F E\_\_ D D